

Workshop Diary

January, February & March 2012

Cuttlebug Fun, Tutor: Judi

Saturday March 24th, 10:30-12:30 then 2:00-4:00 Cost £24

Do you find yourself getting lost with which plates to use for all the different makes of dies? Lack inspiration? Why not come and make a variety of cards using the Cuttlebug (if you own a different make of die cutting machine it does not matter as they all use the same dies/embossing folders) (repeated from Friday March 16th)

Parchment Special: Tutor: Mari

Saturday March 31st, 10:30-12:30 then 2:00-4:00, Cost £20

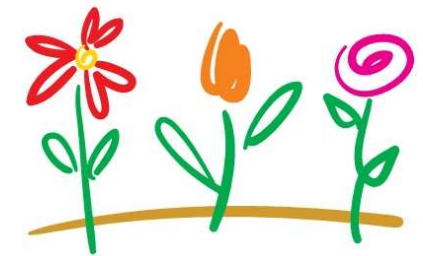
In this all day workshop Mari has a Special project suitable for the beginner or the more advanced.



Example of Birdcage Canvas, Saturday January 21st



Example of Decorative Arch, Saturday February 18th



Garden City Crafts

5 The Wynd

Letchworth Garden City

Herts. SG6 3EN

Phone: 01462-686869

www.gardencitycrafts.co.uk

Terms and Conditions

Pre-booking with full payment is required for all of our workshops, otherwise we can not secure your reservation. If you are unable to attend a workshop please let us know at least 48 hours before to receive a full refund, otherwise no refunds will be offered. We reserve the right to cancel a workshop if there are not enough attendees. If the workshop is cancelled by us you will be given a full refund

Shop 'n' Save

In-store shop purchases made on the day of your class will qualify for a 10% discount. Terms and Conditions apply.

Workshop Loyalty Scheme

Pick up a saver card and get a stamp each time you attend a workshop—collect 10 stamps and claim a free £10 workshop!

We also run the following regular weekly classes with Mari, cost £10 per session:

**** PRIOR BOOKING IS ESSENTIAL ****

Crafty Coffee Morning, Every Monday, 10:30-12:30

No more Monday morning blues-Start the week with a fun craft project. Come and join us for our regular Monday morning crafting session

Parchment, Every Monday, 2:00-4:00

We have parchment projects to suit beginners and the more advanced

Parchment Club, Every Tuesday, 7:00-9:00

All levels and abilities welcome on this weekly parchment class

Birdcage Canvas, Tutor: Sharon

Saturday January 21st, 10:30-12:30 then 2:00-4:00, Cost £22

Using Tim Holtz Birdcage die, make a stunning piece of wall art. A sample of this is attached and can also be viewed in store. (please be quick to book)

Secret Garden, Tutor: Debbie

Saturday January 28th, 10:30-12:30 then 2:00-4:00, Cost £22

Using beautiful soft coloured papers from Craftwork Cards make a selection of simple yet really stylish cards suitable for different occasions. (repeated on Friday February 3rd)

Secret Garden, Tutor: Debbie

Friday February 3rd, 7:00-9:00, Cost £11

Using beautiful soft coloured papers from Craftwork Cards make a selection of simple yet really stylish cards suitable for different occasions. (repeated from Saturday January 28th)

Metal Work, Tutor: Sharon

Saturday February 4th, 10:30-12:30 then 2:00-4:00 Cost £24

Sharon will show you how to add colour and texture to metal foils, You will be making lovely floral embellishments to enhance your projects.

Softly Softly, Tutor: Judi

Saturday February 11th, 10:30-12:30, Cost £12

A delightful trio of cards. You will be using soft shades of very, very pretty pastel papers from craftwork cards.

Less is More, Tutor: Judi

Saturday February 11th, 2:00-4:00, Cost £12

A brand new selection of elegant minimalistic cards with Judi's usual flair (repeated on Tuesday February 28th)

Craftwork Metalliques!, Tutor: Debbie

Friday February 17th, 7:00-9:00 Cost £10

With our new Craftwork Cards metallic range of papers (brown/cream) you will be making 2 cards one male one female. (repeated on Saturday February 25th a.m.)

Decorative Arch, Tutor: Sharon

Saturday February 18th, 10:30-12:30 then 2:00-4:00, Cost £24

Make a fabulous decorative padded arch wall hanging. You will learn lots of different techniques. A sample of this is attached and can also be viewed at store.

Scrapbooking, Tutor: Judi

Tuesday February 21st, 10:30-12:30 then 2:00-4:00 Cost £24

Capture your memories on a double page layout which will be one for the boys—more masculine. We will let you know what you will need to bring once you are booked on the workshop. Basic materials will be supplied but you can purchase extra items if you wish to enhance your pages further.

Papermania Floral, Tutor: Debbie

Friday February 24th, 7:00-9:00 Cost £10

Using a great background stamp from Papermania and the popular Urban stamps, make a selection of cards incorporating acetate and gemstones (repeated on Saturday February 25th p.m.)

Craftwork Metalliques!, Tutor: Debbie

Saturday February 25th, 10:30-12:30, Cost £10

With our new Craftwork Cards metallic range of papers (brown/cream) you will be making 2 cards one male one female. (repeated from Friday February 17th)

Papermania Floral, Tutor: Debbie

Saturday February 25th, 2:00-4:00, Cost £10

Using a great background stamp from Papermania and the popular Urban stamps, make a selection of cards incorporating acetate and gemstones. (repeated from Friday February 24th)

Softly, Softly, Tutor: Judi

Tuesday February 28th, 10:30-12:30 Cost £12

A delightful trio of cards. You will be using soft shades of very, very pretty pastel papers from craftwork cards. (repeated from Saturday 11th February)

Less is More, Tutor: Judi

Tuesday February 28th, 2:00-4:00 Cost £12

A brand new selection of elegant minimalistic cards with Judi's usual flair (repeated from Saturday February 11th)

Colouring with Copics, Tutor: Judi

Saturday March 3rd, 10:30-12:30 then 2:00-4:00 Cost £24

Get the best results from your copics, Judi will show you different techniques for colouring and shading stamped images—It would be helpful to bring any copic markers you may have CLEARLY MARKED to avoid waiting and for your own personal use.

Ladies & Gentlemen (if you please!), Tutor: Judi

Friday March 9th, 10:30-12:30 then 2:00-4:00 Cost £24

Half a day dedicated to each. Using very popular, beautiful quality Dark Room Door Stamps that even come complete with their own storage tin ! (oh very posh eh Judi ?!)

Little Claire Peel-Offs, Tutor: Debbie

Friday March 9th, 7:00-9:00, Cost £10

We made some great cards on the last programme using Little Claire peel-offs. See how many cards you can make using just one sheet (repeated on Saturday March 10th, 10:30-12:30)

Little Claire Peel-Offs, Tutor: Debbie

Saturday March 10th, 10:30-12:30, Cost £10

We made some great cards on the last programme using Little Claire peel-offs. See how many cards you can make using just one sheet (repeated from Friday March 9th)

Black/White & Hint of Colour, Tutor: Debbie

Saturday March 10th, 2:00-4:00, Cost £10

A variety of cards with a touch of Class! We will also be using Martha Stewart edger punches (repeated on Friday March 23rd)

Cuttlebug Fun, Tutor: Judi

Friday March 16th, 10:30-12:30 then 2:00-4:00 Cost £24

Do you find yourself getting lost with which plates to use for all the different makes of dies? Lack inspiration? Why not come and make a variety of cards using the Cuttlebug (if you own a different make of die cutting machine it does not matter as they all use the same dies/embossing folders) (repeated on Saturday March 24th)

Spring is in the Air, Tutor: Joan

Saturday March 17th, 10:30-12:30 then 2:00-4:00, Cost £22

Joan has a selection of Floral cards (including a spring/diamond shaped card) using silver foiled metallique papers (pink shades) from Craftwork Cards.

Black/White & Hint of Colour, Tutor: Debbie

Friday March 23rd, 7:00-9:00, Cost £10

A variety of cards with a touch of Class! We will also be using Martha Stewart edger punches. (repeated from Saturday March 10th)